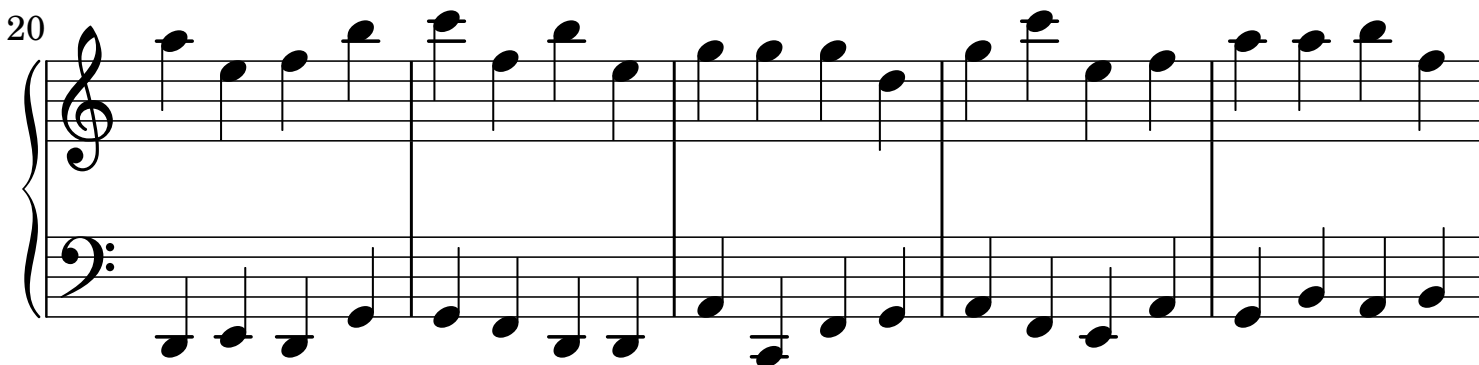
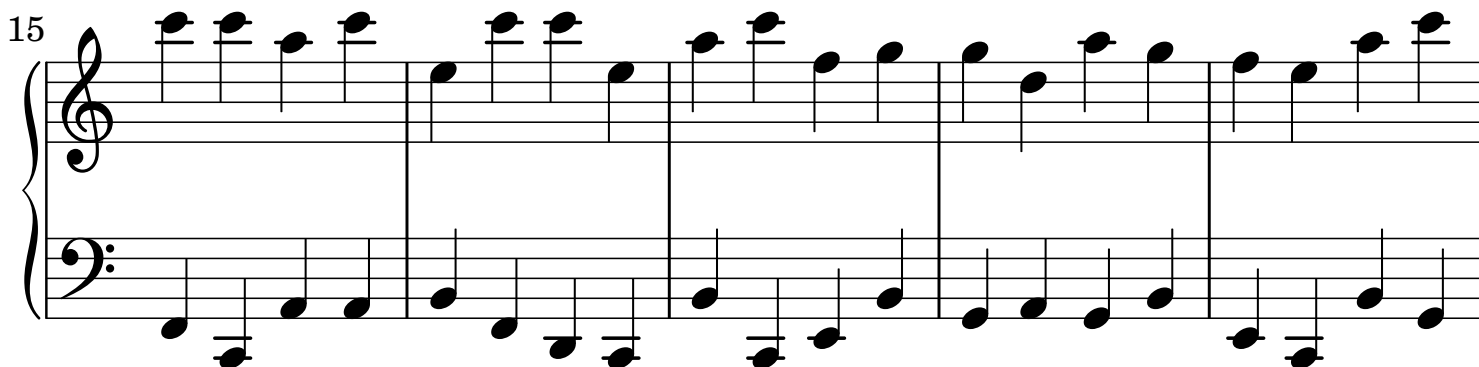
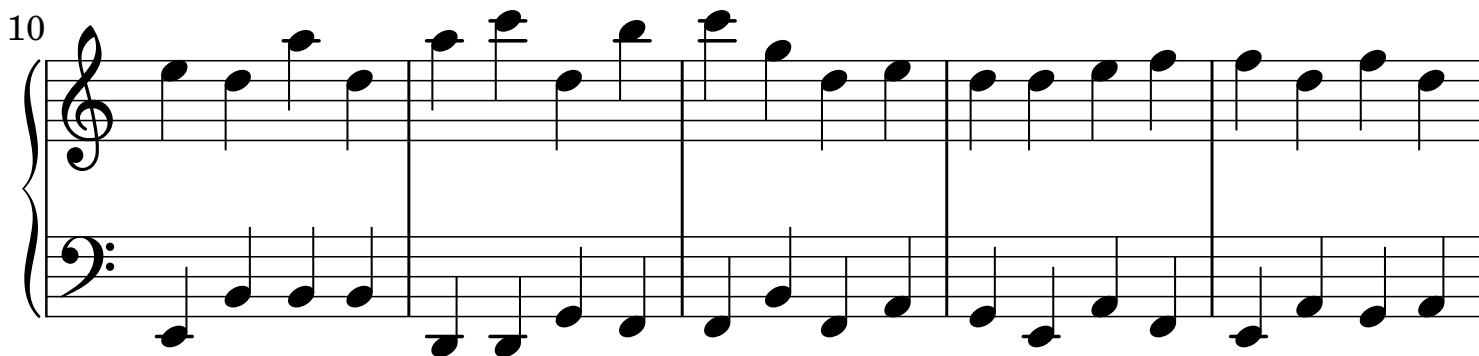
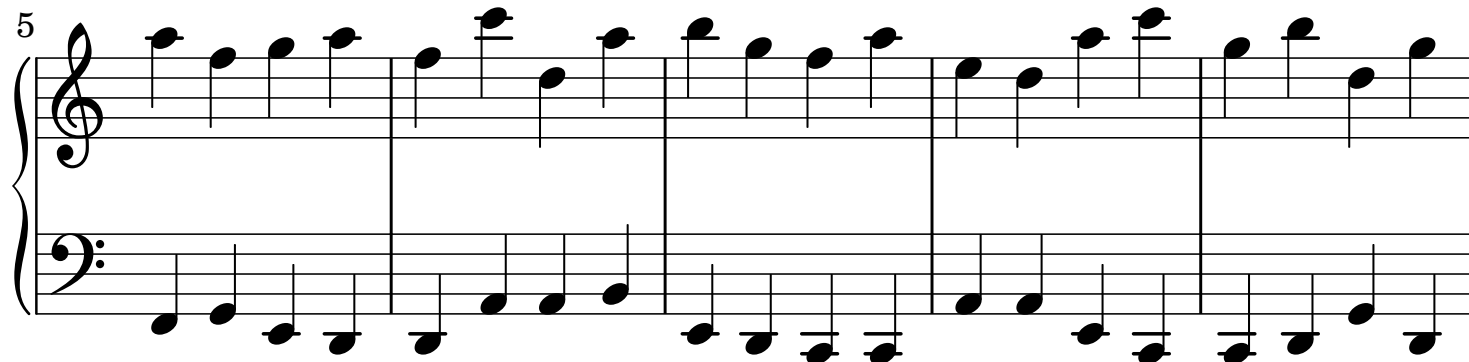
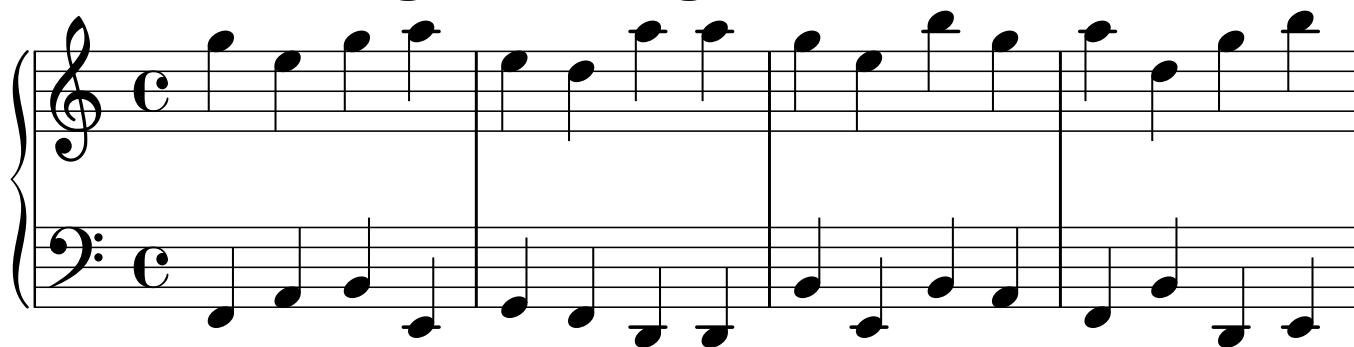


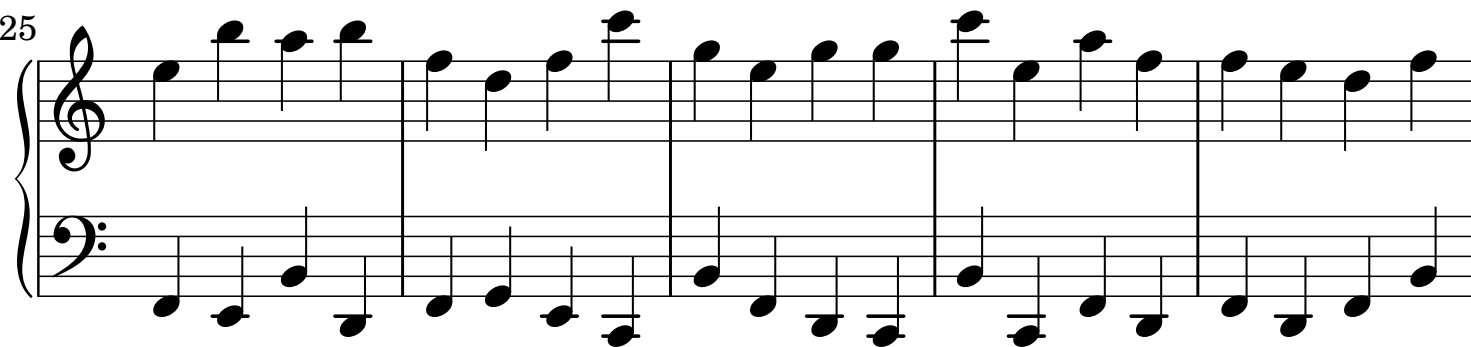
# Landmark Low F High G

## Sight Reading Practice

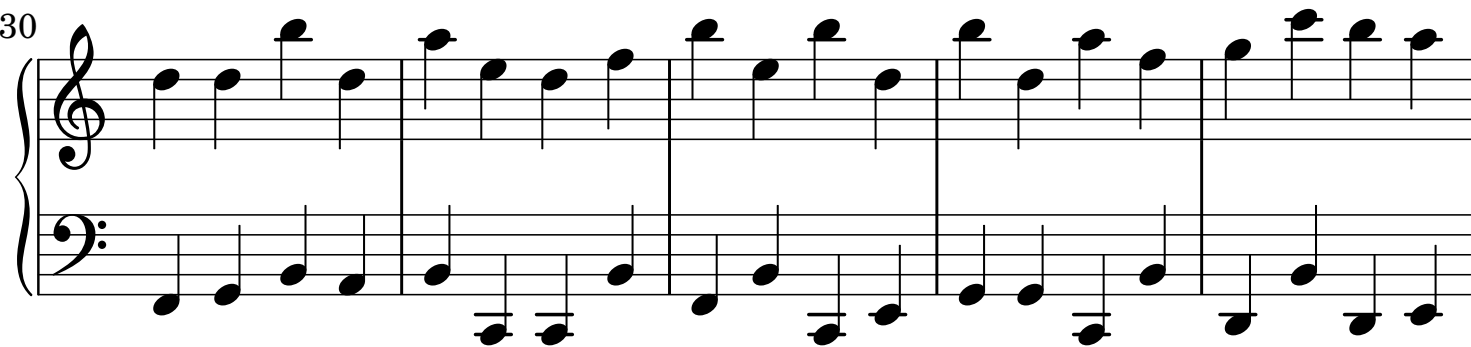
Piano



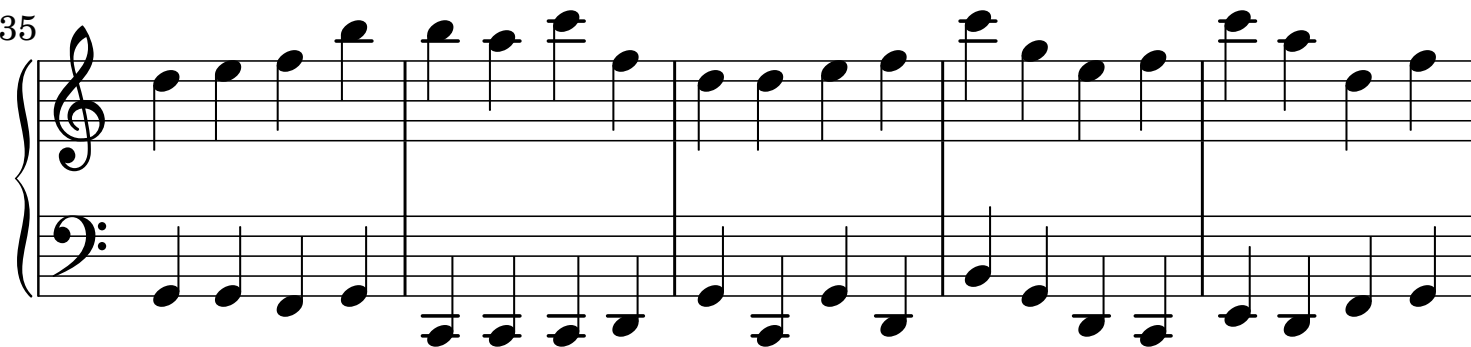
25



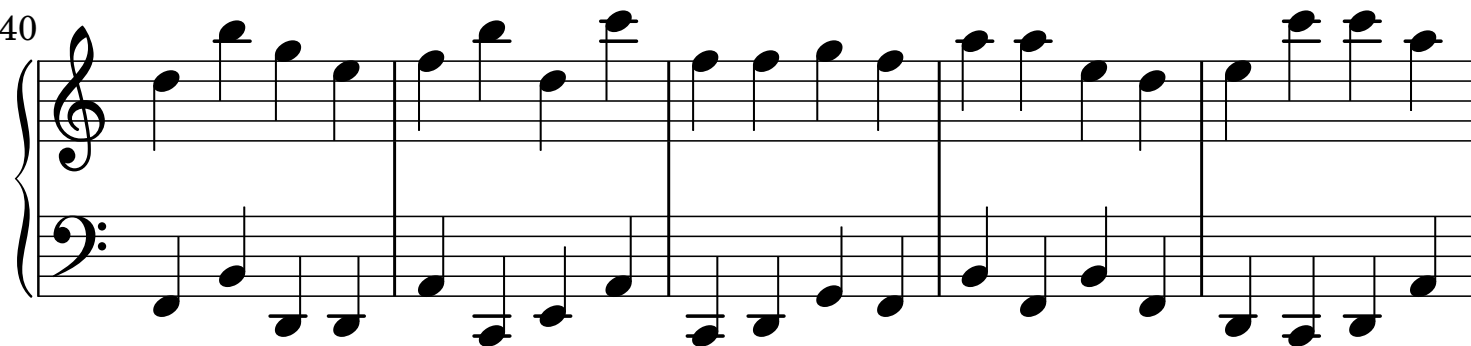
30



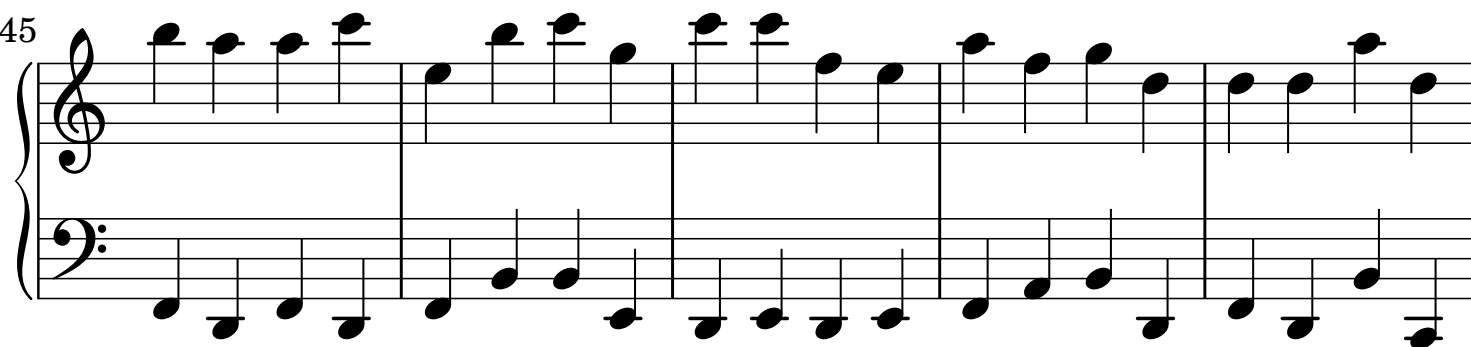
35



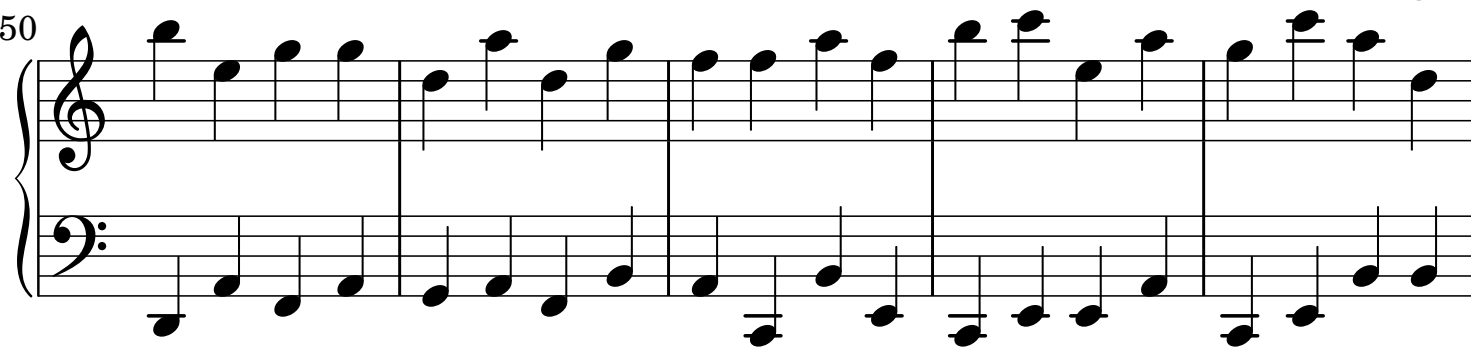
40



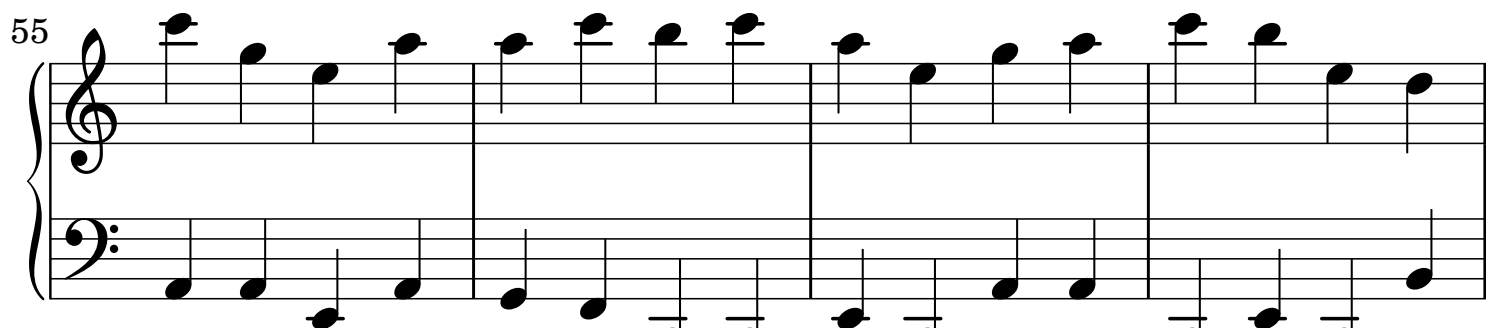
45



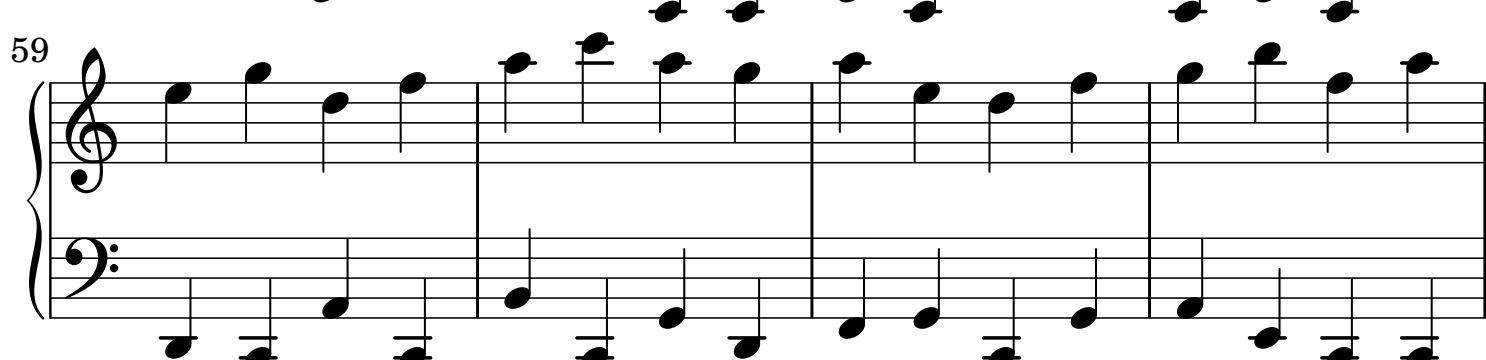
50



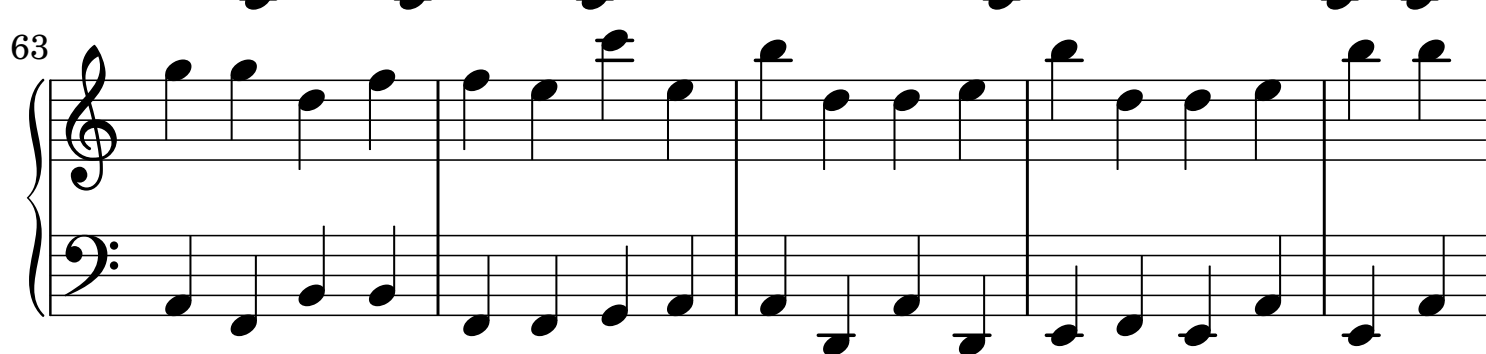
55



59



63



The image displays three systems of musical notation, each consisting of a grand staff (treble and bass clefs). The first system, labeled 55, contains measures 55 through 58. The second system, labeled 59, contains measures 59 through 62. The third system, labeled 63, contains measures 63 through 66. The notation includes various note values, rests, and bar lines, with some notes beamed together. The music is written in a standard Western staff format.