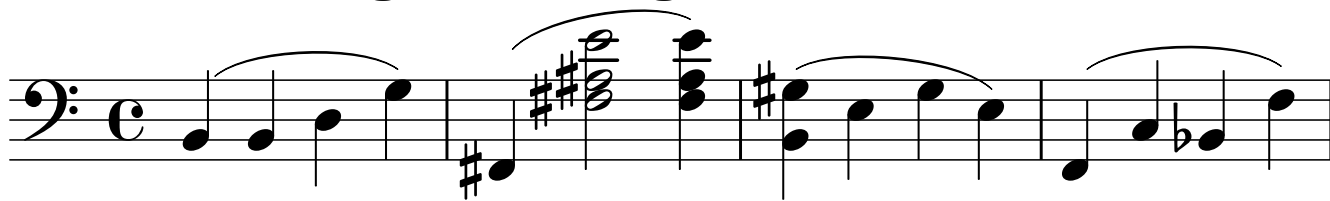


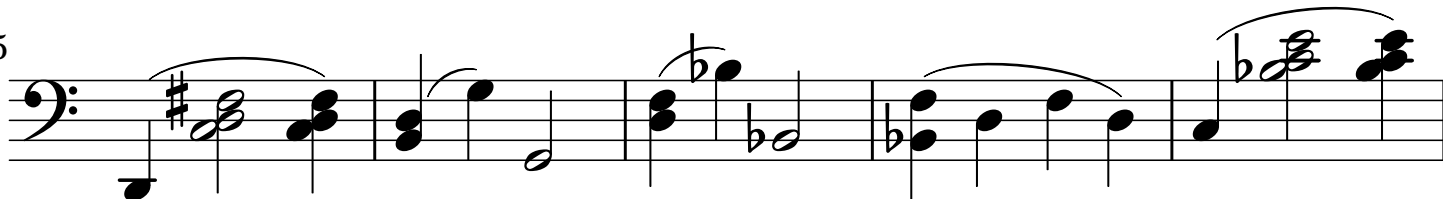
Recognize Bass Clef Chords/Intervals

Sight Reading Practice

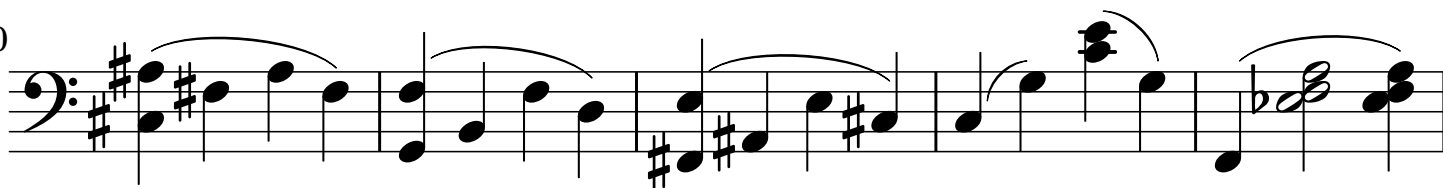
Piano



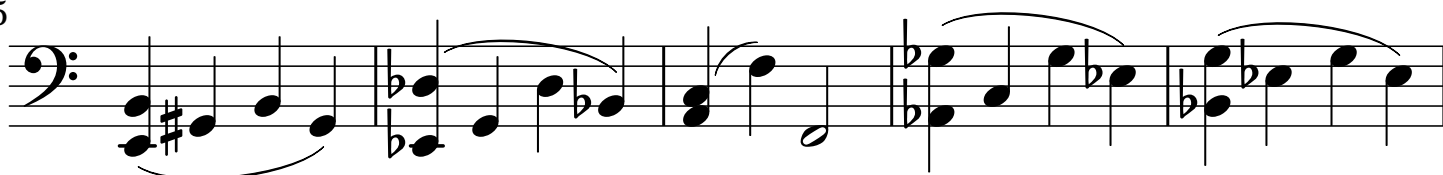
5



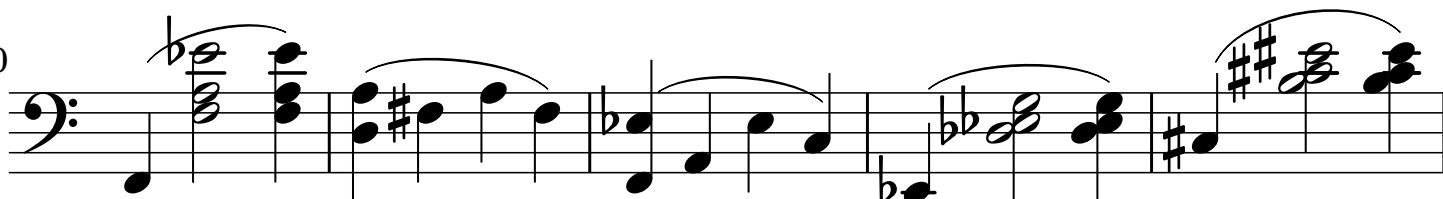
10



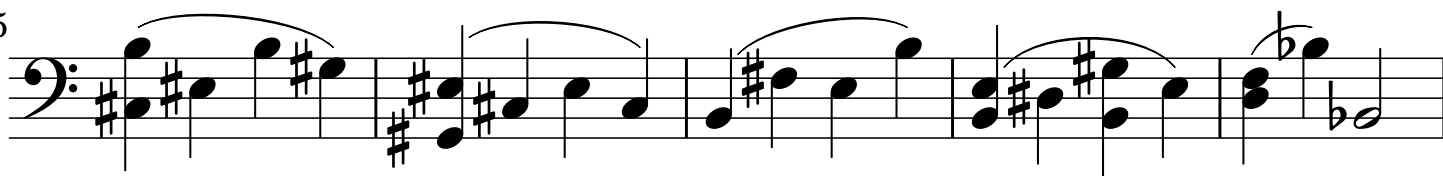
15



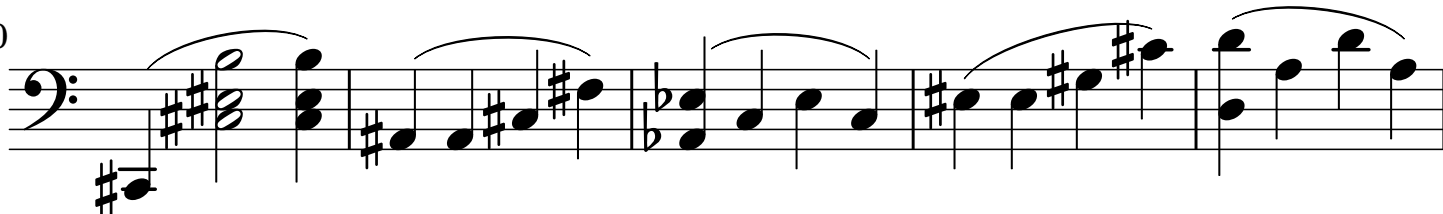
20



25



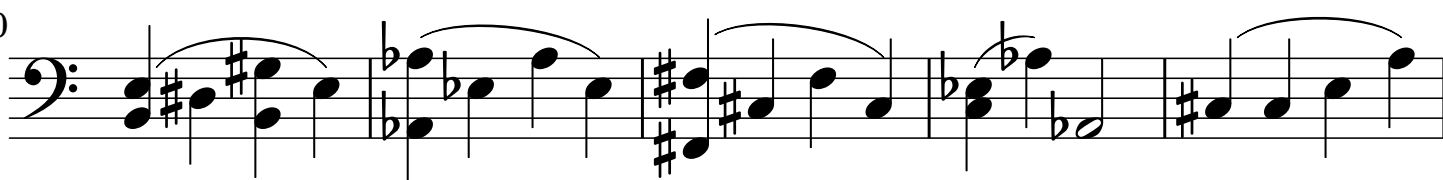
30



35



40

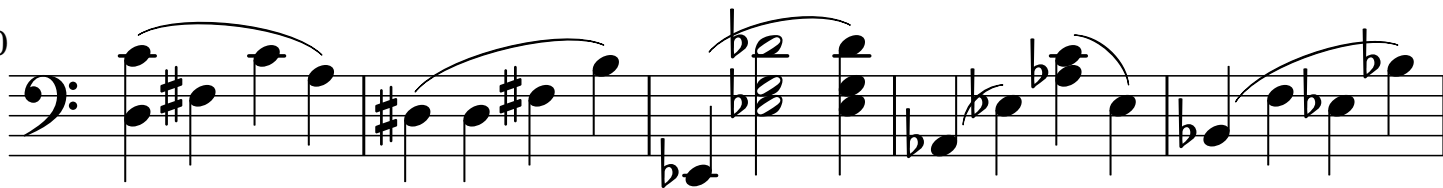


2

45



50



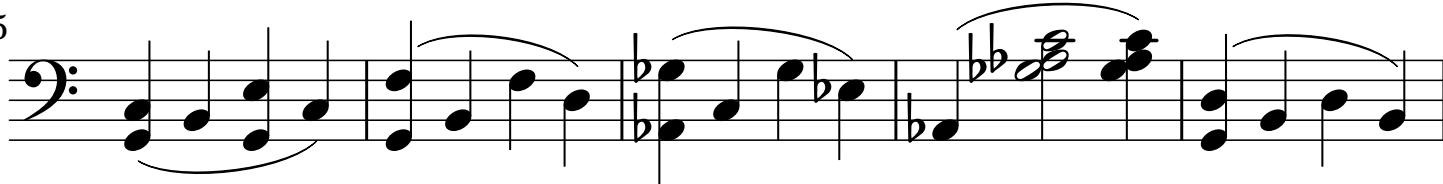
55



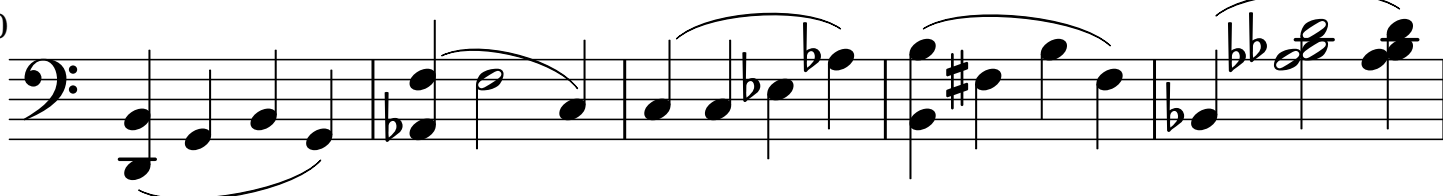
60



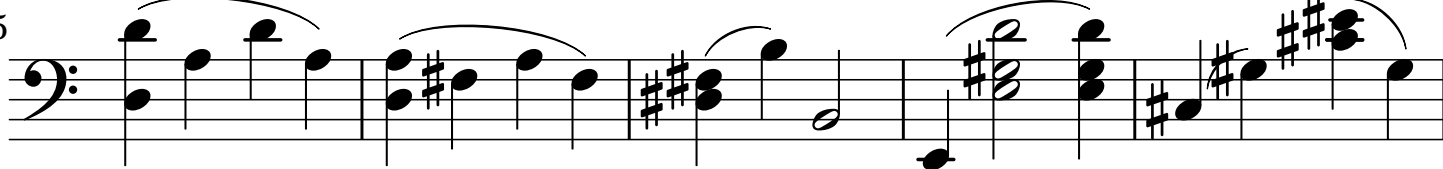
65



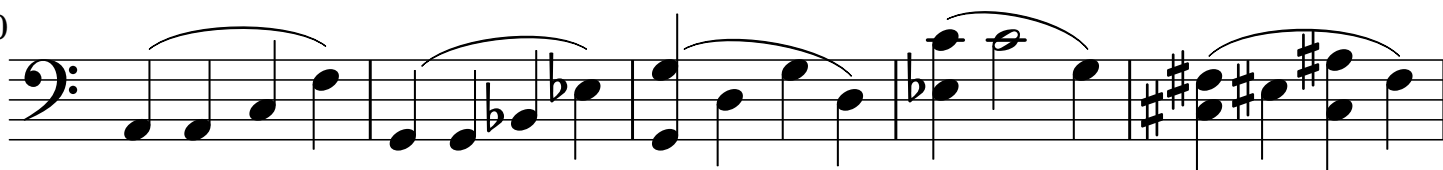
70



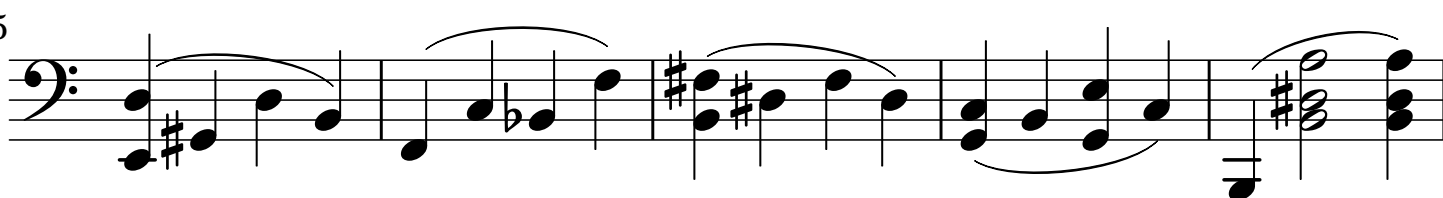
75

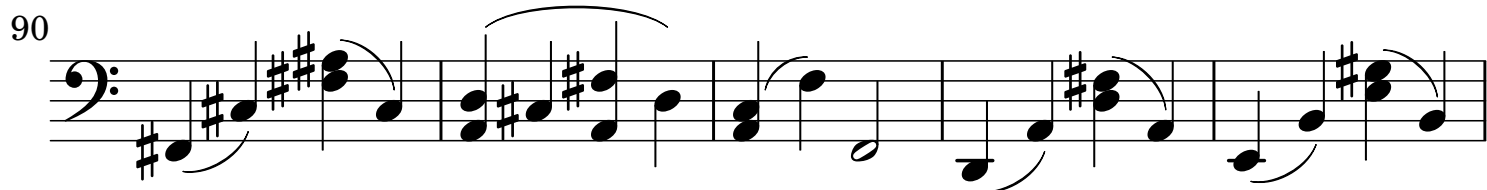


80

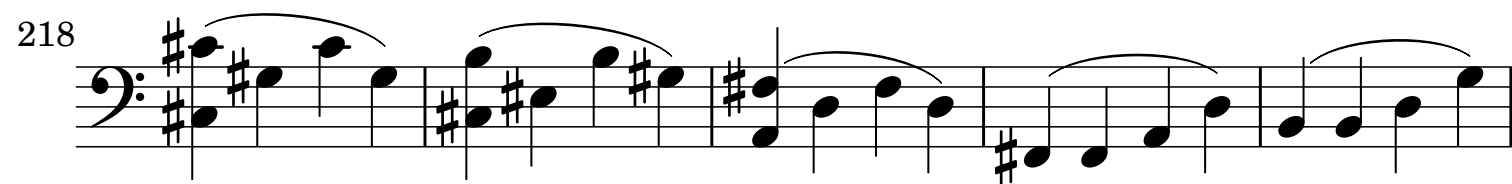
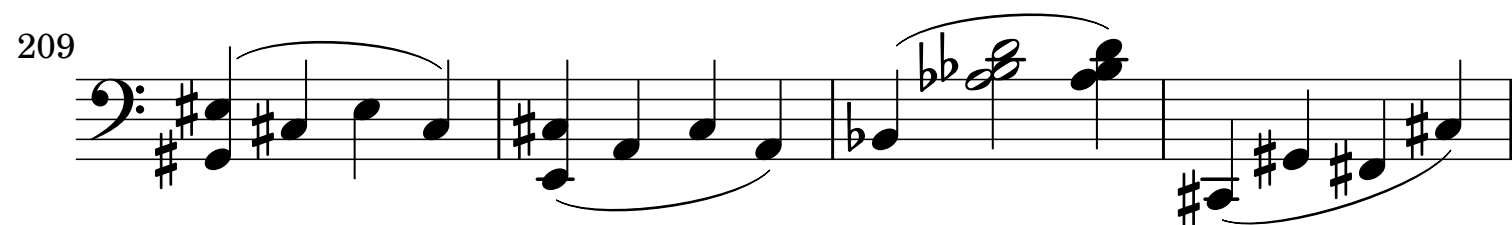
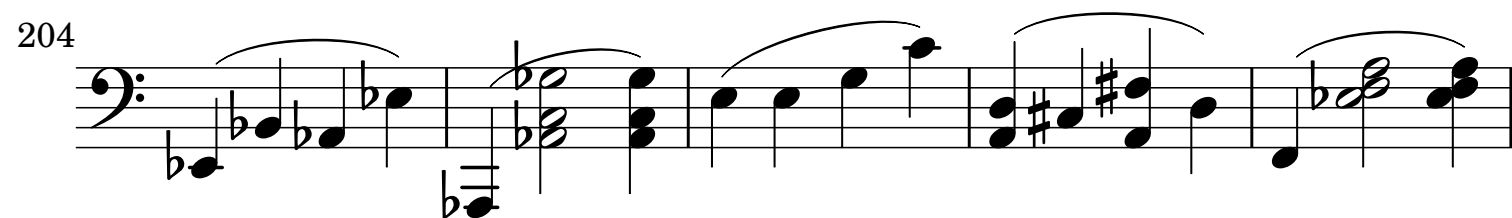
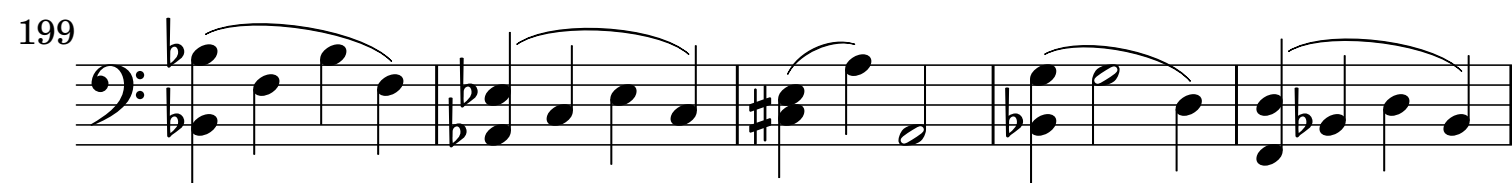
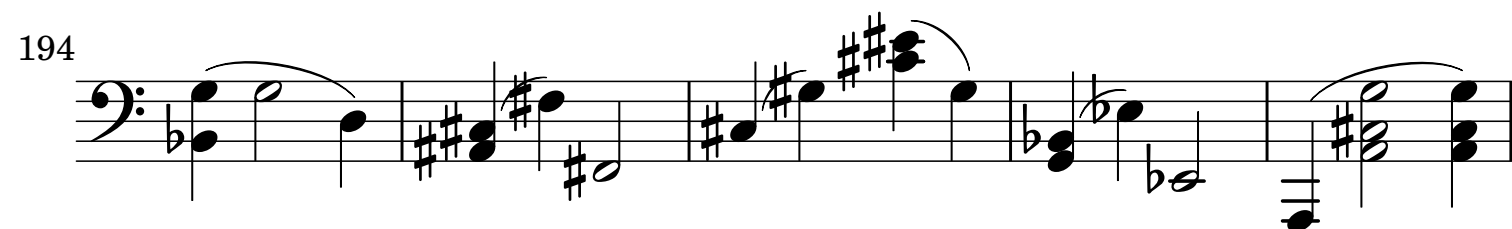
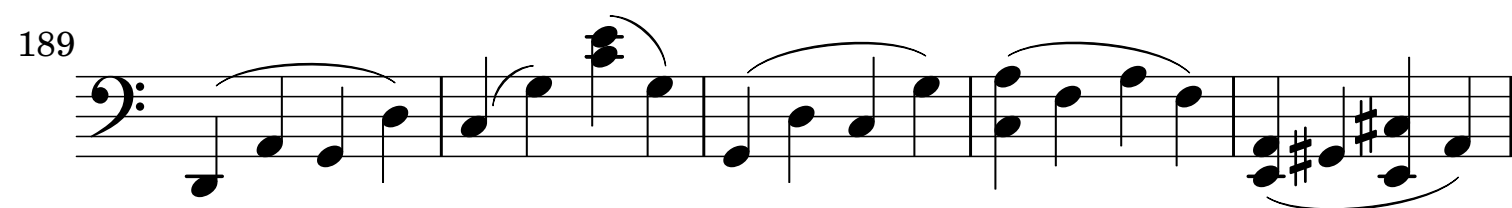
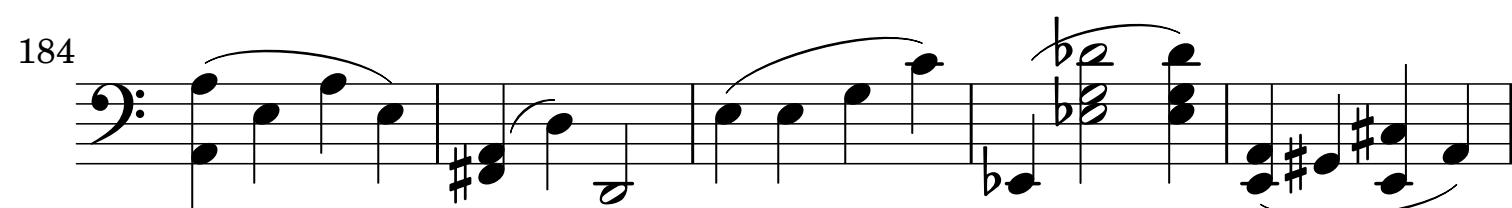
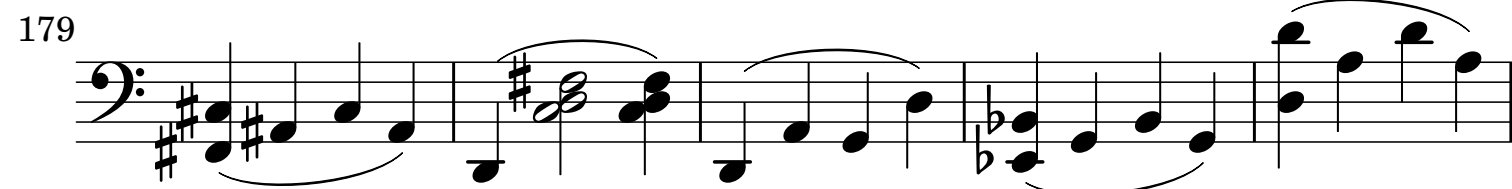


85









228

233

238

243

248

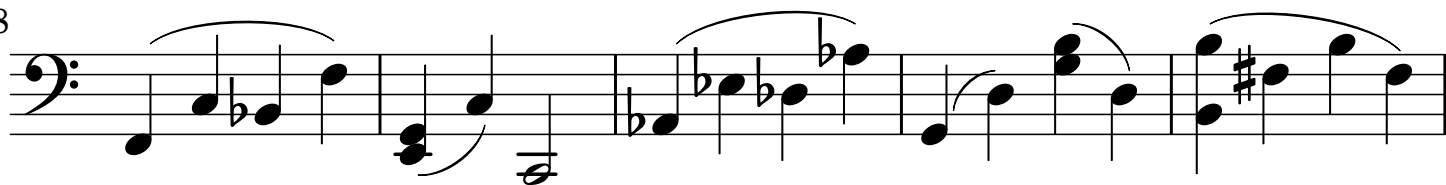
253

258

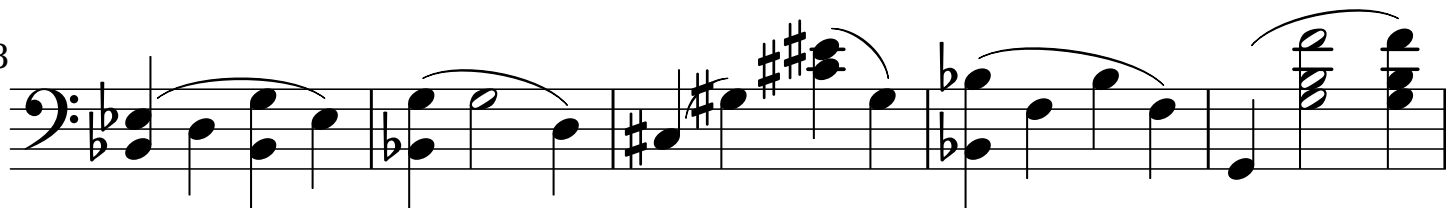
263

A musical score for the bass line of 'The Rose Tree'. The notation is on a single staff with a bass clef. It begins with a treble clef and a key signature of one flat (B-flat). The melody consists of eighth and quarter notes, with some notes beamed together. There are several slurs and ties. The key signature changes to one sharp (F#) in the final measure.

268



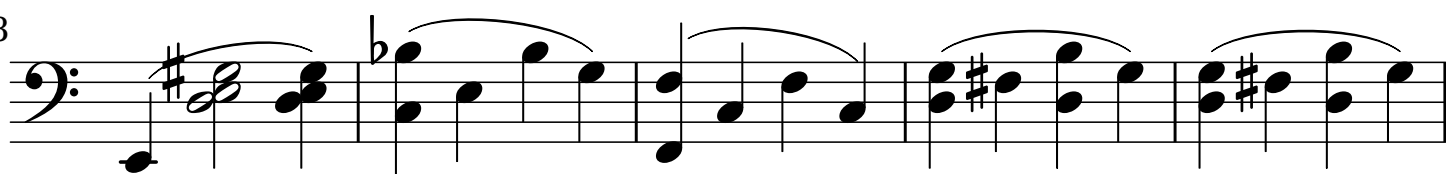
273



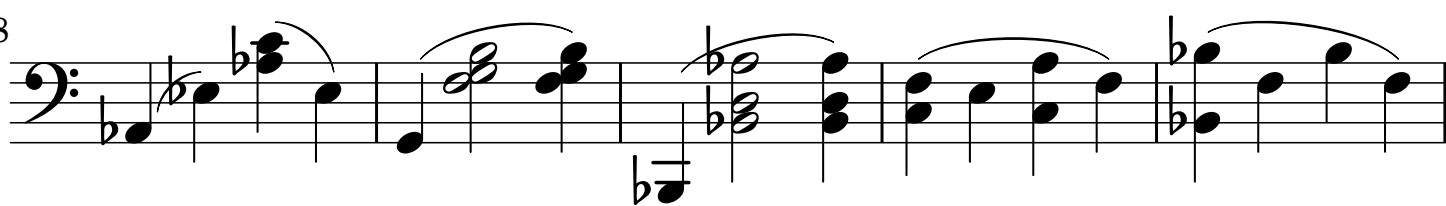
278



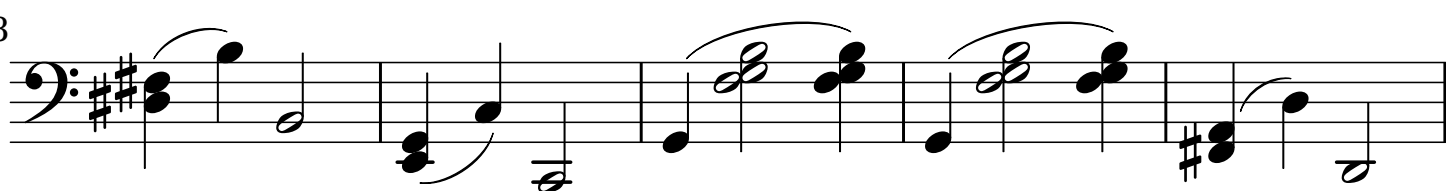
283



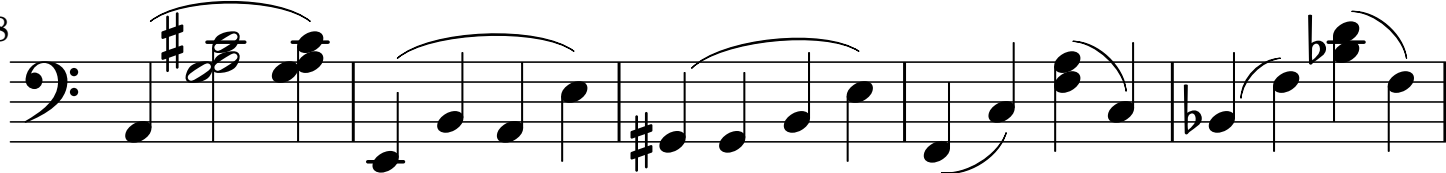
288



293



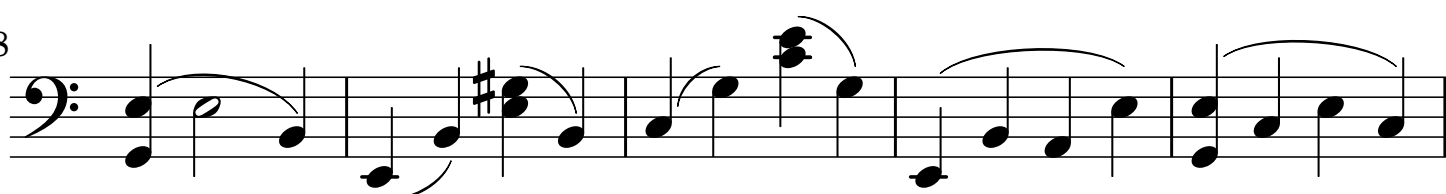
298

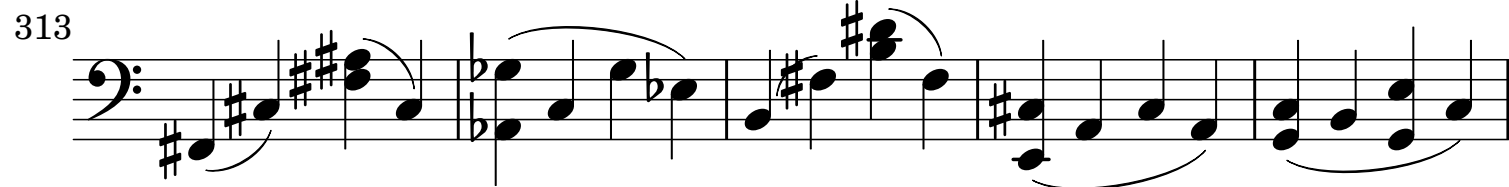


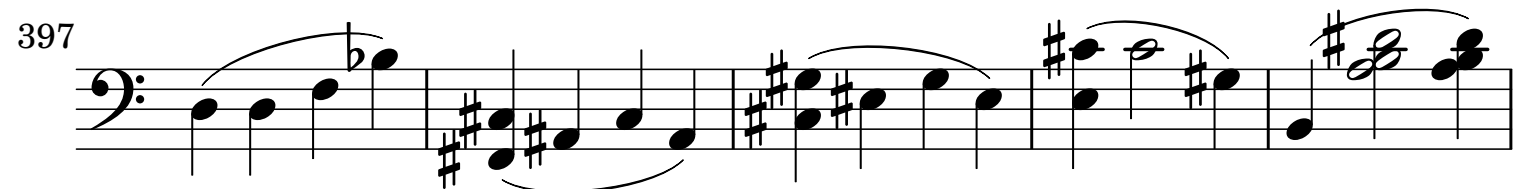
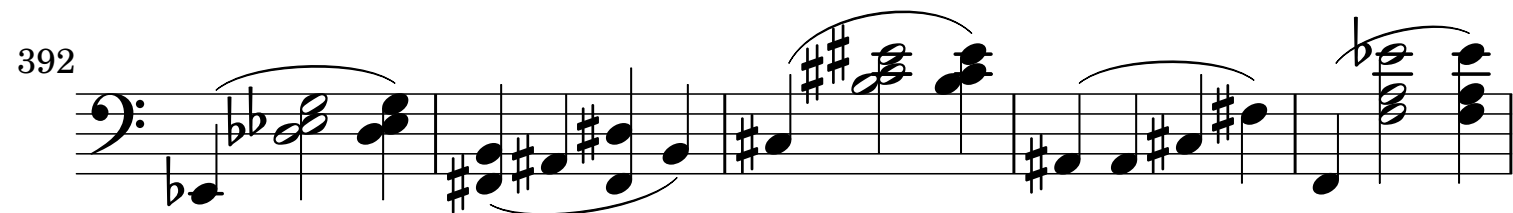
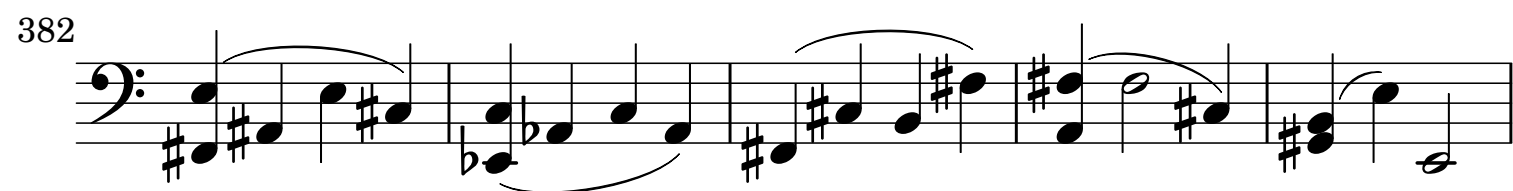
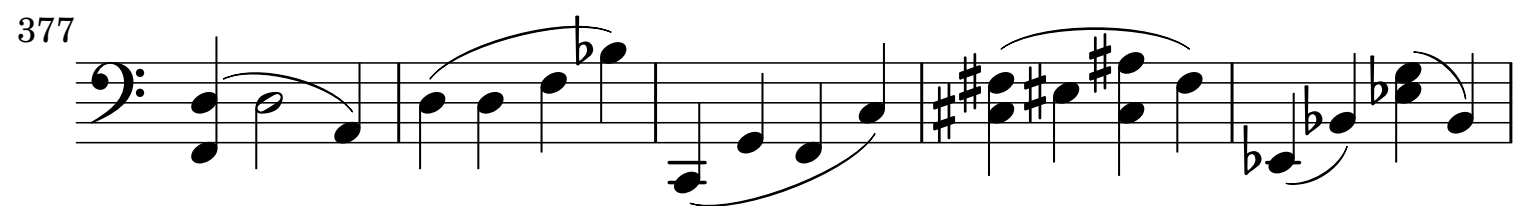
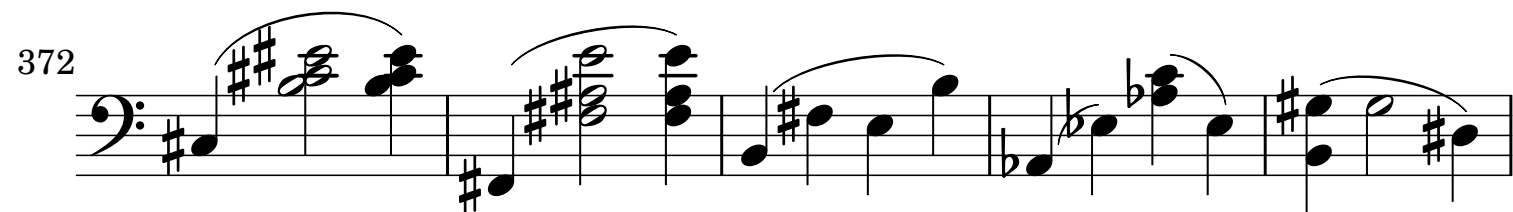
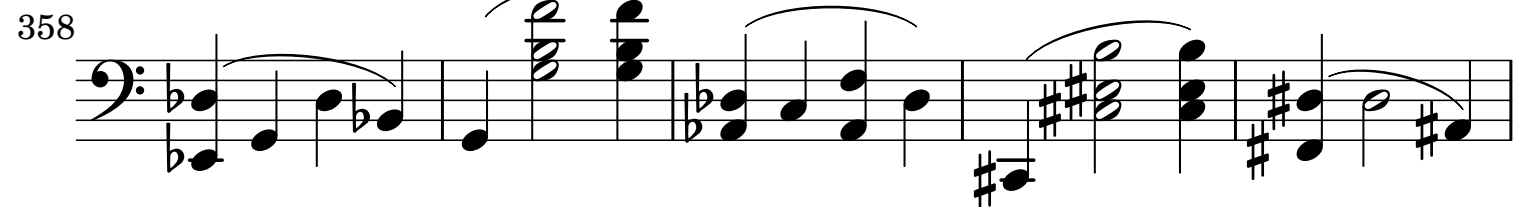
303



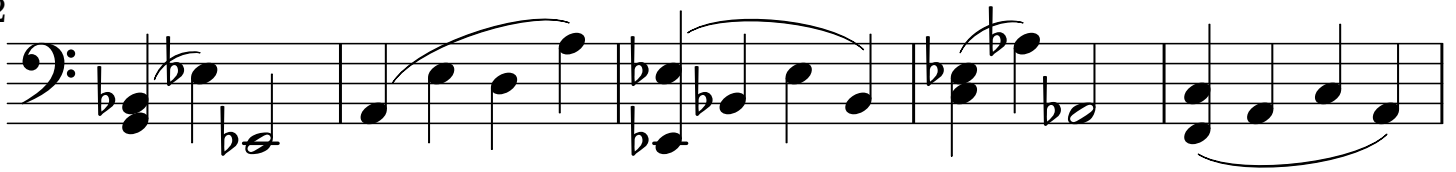
308



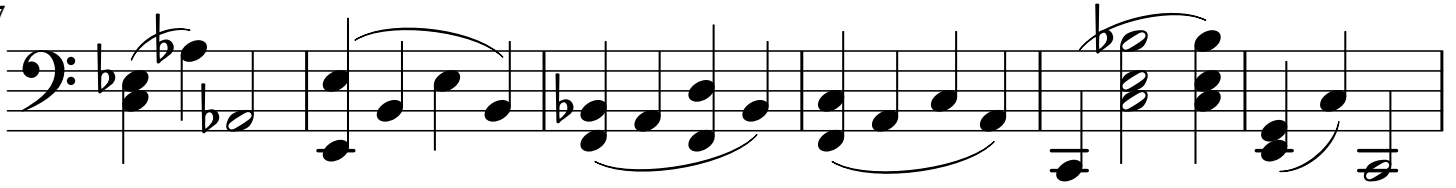




402



407



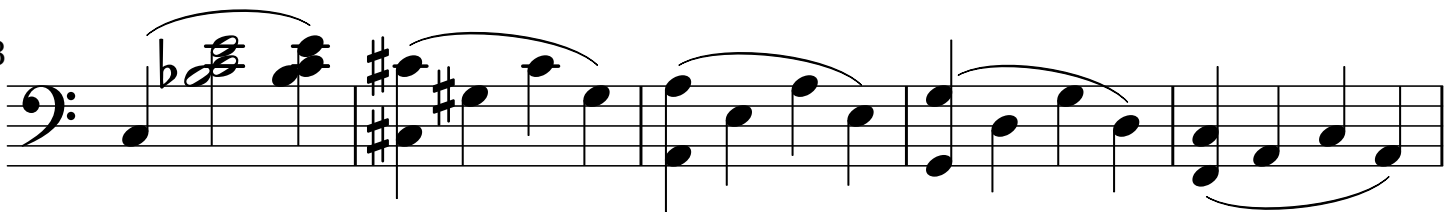
413



418



423



428

